

Adobe Premiere 6.5 for Windows

Export MPEG files with the Adobe MPEG Encoder

With the new Adobe MPEG Encoder, Adobe® Premiere® 6.5 for Windows takes you one step closer to easy, yet flexible, DVD creation from your projects. The Adobe MPEG Encoder creates high-quality MPEG-1 and MPEG-2 output for DVD, Super Video CD, Video CD, and cDVD. This tutorial shows experienced MPEG creators how to use the Adobe MPEG Encoder to prepare a custom setting and export a project intended for DVD. Premiere for Windows also comes bundled with DVDIt!LE for authoring DVDs, so you can open exported MPEG files in DVDIt!LE, and then use that application to build and burn a DVD.

If you use Mac OS, you can export a movie in MPEG-2 format if you have DVD Studio Pro installed, or you can export it as QuickTime DV to be read by iDVD.



1. Prepare the project for export.

After you edit a project and are ready to export it, choose File > Export Timeline > Adobe MPEG Encoder.

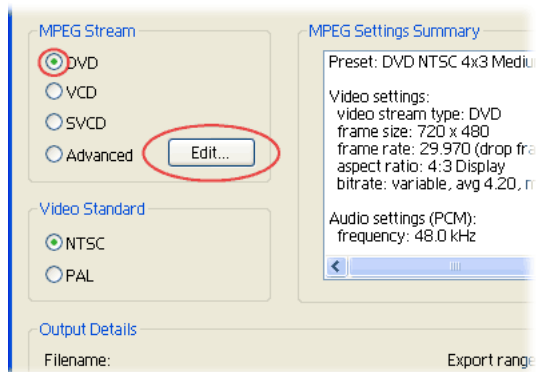
The first time you use the Adobe MPEG Encoder, you are prompted to activate it. If you have Internet access, click Internet Activation. The browser opens to the Web page containing the activation code. Enter this code in the Activate dialog box, and click Activate. If you don't have Internet access, click Phone Activation, and call the number that appears. Enter the code that you receive, and click Activate. Activation is a one-time process.



2. Choose preliminary settings.

The first MPEG Export Settings dialog box displays a summary of all the selections you make for export. In most instances, you can select just one of the MPEG Stream options and export immediately. This method is the preferred method for quick MPEG export. However, if you are experienced with the various components of MPEG file creation, you can edit the export parameters. To edit the parameters, first select DVD, and then click Edit. The Advanced MPEG Settings dialog box appears.

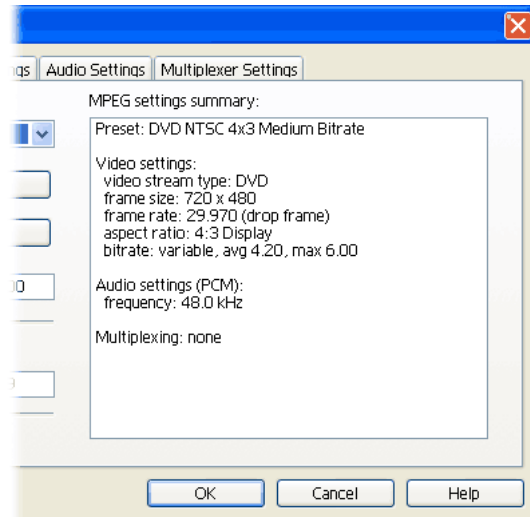
As mentioned, the default settings suffice for most DVD creation, and they are the recommended settings for export. Though you can manually change specific parameters of an MPEG file, you should do so only if you know exactly the nature of the change and are knowledgeable about the particulars of MPEG compression and playback.



3. Modify settings.

The Advanced MPEG Settings dialog box displays four tabs. The panel for each tab contains settings you can modify. The first panel, Basic Settings, displays the overall file settings. The Presets menu contains the available presets for export, each of which has unique settings. The Video Type menu contains the possible destinations for export. Depending upon your choice from the Presets menu, the Video Type menu changes to match. To create a custom setting, however, you must not only choose an option from one of these menus, but you must also manually change a value on any of the panels. For example, if you adjust the Video bitrate slider, you are then creating a custom setting. Click each tab that contains settings you want to modify.

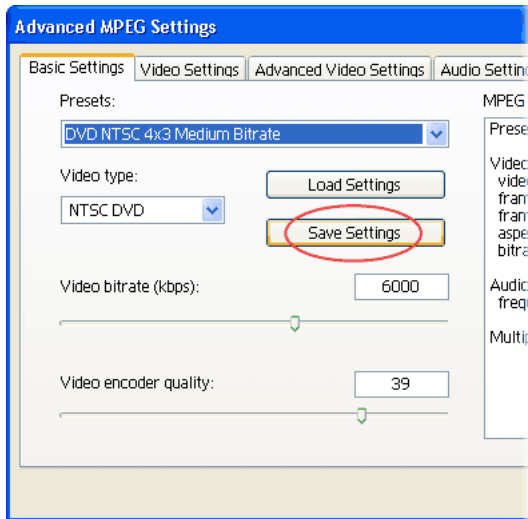
Many changes you make in these panels are reflected in the MPEG settings summary on the Basic Settings panel. If you make an invalid change (a change that isn't compatible with the selected video type), then the summary lists the change in red. To check whether a change you make in a panel other than Basic Settings is invalid, just click the Basic Settings tab, and check the summary for red text.



4. Save the custom setting.

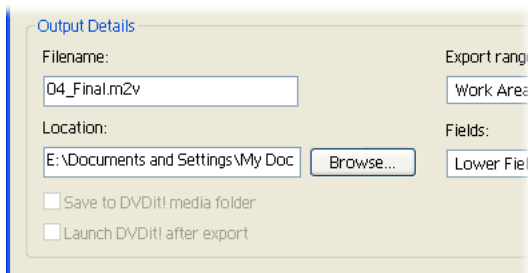
After you create the custom settings, click the Basic Settings tab. Click the Save Settings button. Specify a name for the setting, and click Save. In the subsequent dialog box, note the location for the saved file, and click OK.

Custom settings are saved as .ini files. These files are small and easily transferrable, making them ideal to share with other users. When you want to use a saved or shared custom setting, just click Load Settings in the Advanced MPEG Settings dialog box, navigate to the setting, and click Open.



5. Export the file.

After you save the custom settings, click OK in the Advanced MPEG Settings dialog box. In the Adobe MPEG Encoder dialog box, check the settings in the summary window. Also, specify a Filename and Location, if necessary. Choose an export range from the menu. If DVDit! is installed, you can also select the options to save the exported file in the DVDit! media folder and to open it in DVDit! after export. After you are satisfied with your selections, click Export.



6. Use third-party applications to build a DVD (optional).

Now you are ready to build a DVD with the exported file. As indicated, Premiere 6.5 for Windows comes bundled with DVDit!LE, which you can use to build and burn DVDs. For information on using DVDit!LE, see the DVDit!LE User Guide on the Premiere 6.5 CD-ROM for Windows.

Many other DVD creation applications are available from third-party application vendors. Check with the vendor for more information on compatibility and features.

